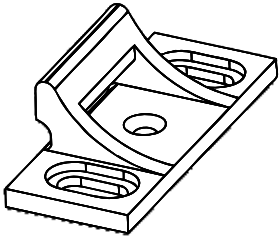


# VALUE SERIES® Accessories

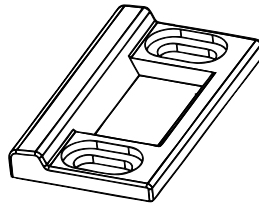
## Strikes

---

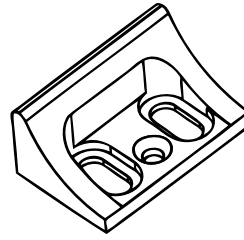
All required strikes are provided with exit devices. Replacement strikes are available as follows:



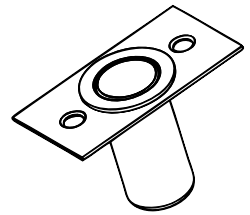
**99** Surface - non-roller strike for V40 Series Rim Devices



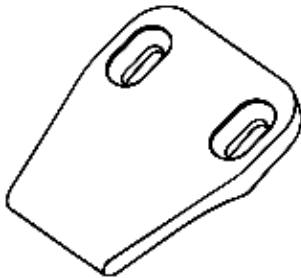
**98** Semi-Mortise - applied strike for V40NS Series Rim Devices



**96** Top Surface - non-roller top strike for V50/51 Series Surface Vertical Rod Devices



**96** Bottom Dust Proof Strike - for V50 Series Surface Vertical Rod Devices



**94** Double Door Strike for V40 Series Rim Devices

## Through Bolt Mounting Plate Kit for SVR

---



**TMP1** - Through Bolt Mounting Plate Kit for use when replacing surface vertical rods on doors that are damaged or to cover existing exterior holes from previous device.

Kit is standard with two 630 finish plates and four 1/4-20 sex bolts. Contact factory for other finishes.

## Cylinders

---



**MC65** Mortise Cylinder - 1-1/8" 6-pin, keyed 5-pin. Available keyed alike or keyed differently. Finishes available: 605, 606, 612, 613, 626



**RC65** Rim Cylinder - 6-pin, keyed 5-pin. Available keyed alike or keyed differently. Finishes available: 605, 606, 612, 613, 626



**IC7** Interchangeable core cylinder housing - 7-pin, factory installed

### Security Screw Kits

Contains an assortment of screw sizes and types for securing covers in place

**SSK3** - Security Screw Kit contains all screws and driver bits to secure the cover, end cap and the strike of the exit device.

Additional Security Driver Tips:

**TT-10** - Driver tip for 6-32 Undercut FH screws

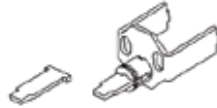
**TT-27** - Driver tip for 1/4-20 and #14 screws

### Sex Nut Kit



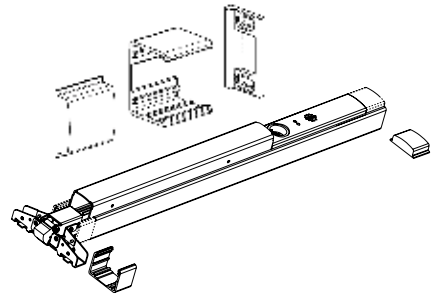
**SN1** - Sex Nut Kit 1/4-20 — 2 per package

### Cylinder Bracket Kit



**CBK** - Cylinder Bracket Kit consists of bracket and adjustable tailpiece assembly for rim cylinder used with other manufacturer's outside trim

### Narrow Stile Door Kits



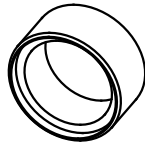
**NSK** - Narrow Stile Door Kit converts standard Value Series panic device into narrow stile panic device. Required when Value Series exit devices are applied to 36" and 48" glass doors with minimum 2" stiles.

### Cylinder Collars

Cylinder Collars for 5 and 6 pin cylinders are provided with all outside trim.



**CCS** 7/16" Short Cylinder Collar - Cylinder collar for 5 and 6 pin cylinders. Finishes available: 605, 606, 612, 613, 625, 626



**CCL** 11/16" Long Cylinder Collar - Cylinder collar for 7 pin interchangeable core cylinders. Finishes available: 605, 606, 611, 612, 613, 625, 626

### Tools



**HDK** - Hex Dogging Key - Heavy-duty with overmolded ABS, dogging key is ergonomically designed to resist repetitive motion injuries.

### Rod Cover (V50/51 Only)



**RC** - Rod Covers (630 Stainless Steel)

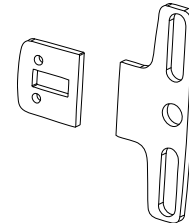
(Top Rod cover shown)

### Bolt Guard (V50 Only)



**BG** - Bottom Bolt Guard - 12" ADA ramped cover (630 Stainless Steel)

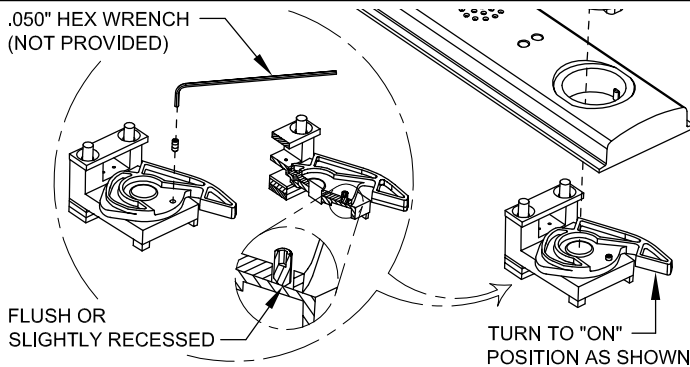
### Glass Bead Kits



For use on doors with raised glass beads. Each kit contains one 1/4" shim set. Specify Kit number

Kit Number **GB15** For use with: **V40 Series**

### Key Stop Kit (Set Screw) Alarm always armed when key is removed



For weatherized gate accessories, see gate plate page

Cancer & Reproductive Harm - [www.detex.com/prop65](http://www.detex.com/prop65)



Detex Corporation  
302 Detex Drive  
New Braunfels, Texas 78130-3045 USA  
PH. (830) 629-2900  
(800) 729-3839  
FAX (800) 653-3839  
<http://www.detex.com>  
USA Sales:  
[marketing@detex.com](mailto:marketing@detex.com)  
International Sales:  
[export@detex.com](mailto:export@detex.com)